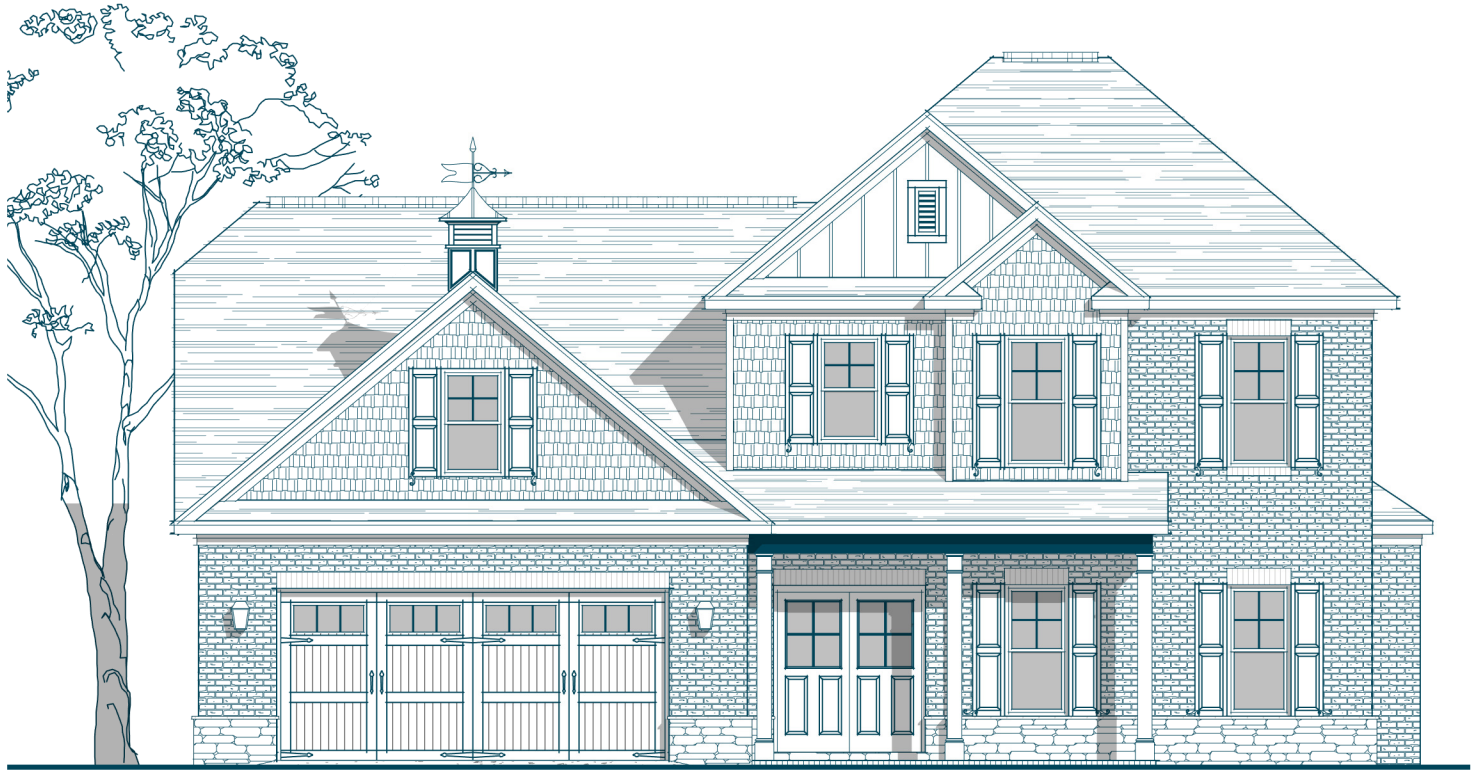


# ADELINE TRANSITIONAL



## Specs:

## Options Shown:

Bedrooms:	4	1 Covered Porch	7 Owners Bath Luxury Layout
Bathrooms:	3 1/2	2 Screened in Porch	8 Drop Zone Built-in
Square Footage:	2,898 Sq.Ft.	3 Sunroom (Adds 168 Sq.Ft.)	9 Upper Level Laundry Layout
First Level:	1,515 Sq.Ft.	4 Sunroom 'B' (Adds 240 Sq.Ft.)	10 Bath-3 Double Vanity
Second Level:	1,383 Sq.Ft.	5 2'-0" Wider Garage w/ Two Doors	
Width:	48'-10"	6 2'-0" Garage Extension	
Depth:	44'-10"		

12/4/2018 2:17:43 PM

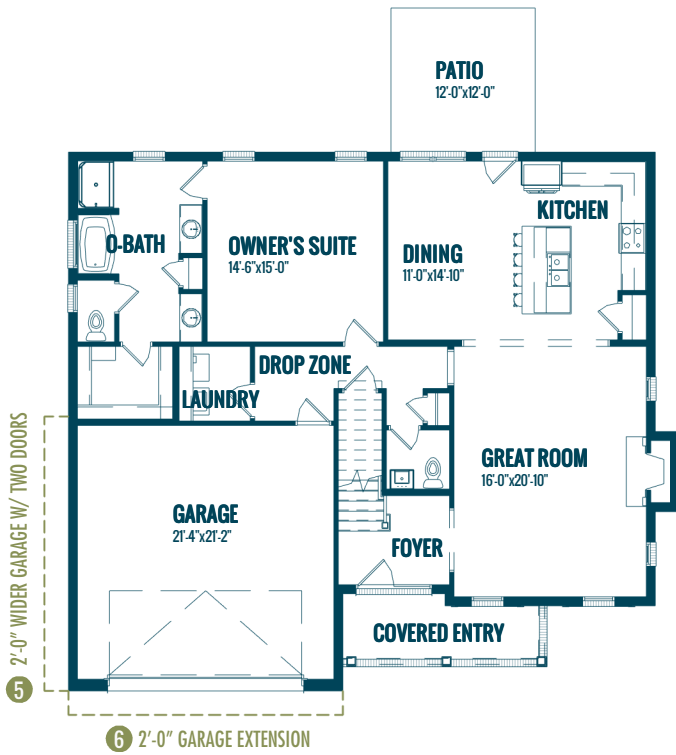


Watercolors, illustrations, and floor plans shown are for marketing purposes only and are subject to change at builder's discretion. Square footage is outside veneer and should be independently verified. This is not a legal document.

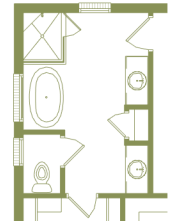
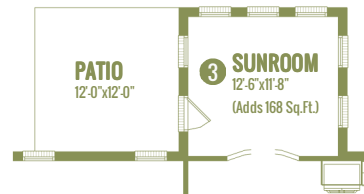
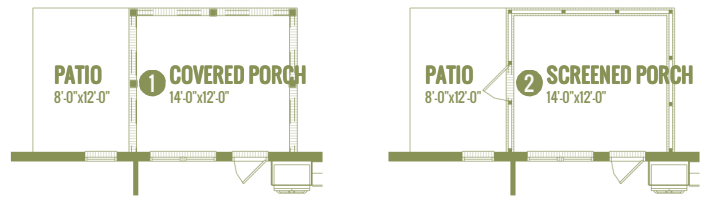
3411 HEALY DRIVE, SUITE A, WINSTON-SALEM, NC 27103  
4330 SOUTHPORT SUPPLY ROAD, SUITE 101, SOUTHPORT, NC 28461

336.659.8211  
910.363.1620

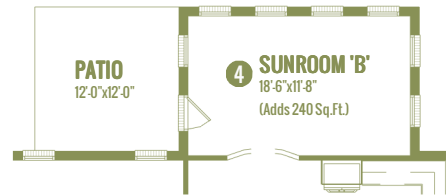
ISENHOURHOMES.COM



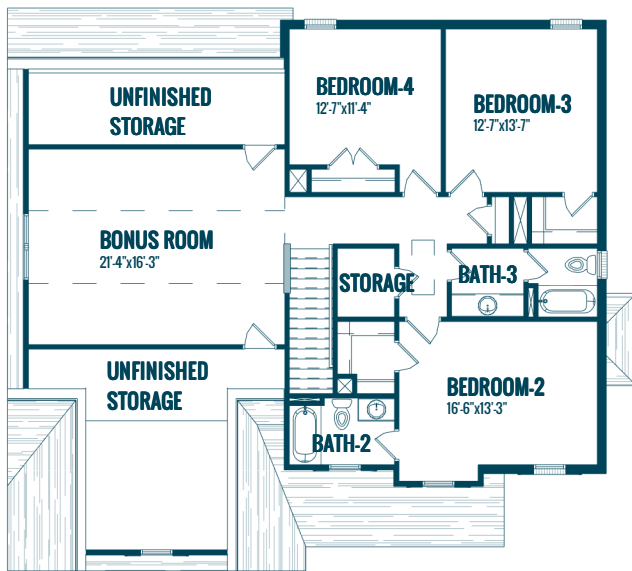
MAIN LEVEL



**7** OWNERS BATH LUXURY LAYOUT



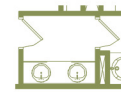
**8** DROP ZONE BUILT-IN



UPPER LEVEL



**9** UPPER LEVEL LAUNDRY LAYOUT



**10** BATH-3 DOUBLE VANITY



**5** 2'-0" WIDER GARAGE W/ TWO DOORS